

# **Private Protected Areas in Republic of Korea**

**14. Nov. 2013**

**Hag Young HEO**

**Research Fellow, Partnership Department  
Korea National Park Service(KNPS)**



# Index

**1. Background**

**2. Examples of PPAs in Korea**

**3. Challenges**



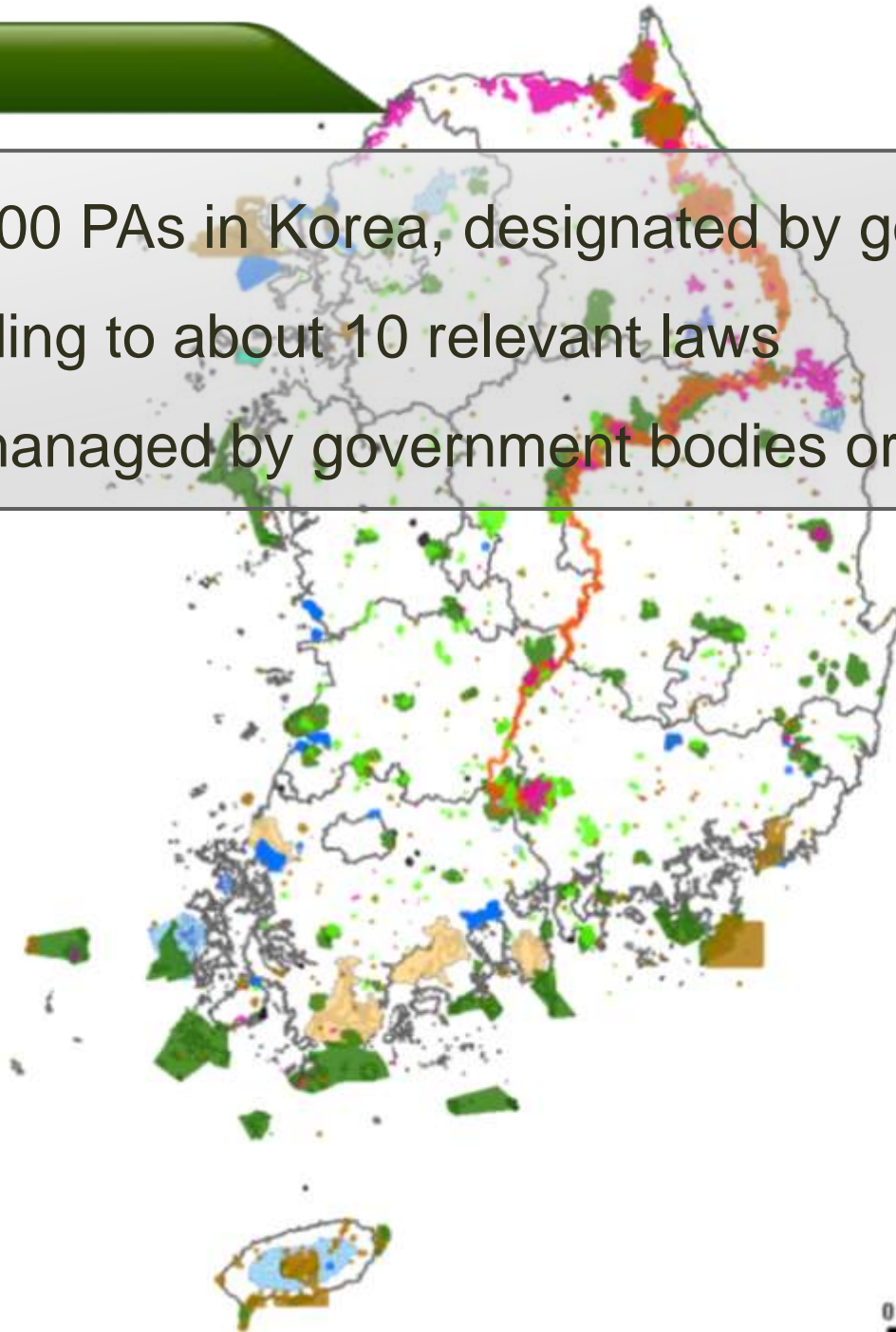


# Background



## Background

- More than 1,400 PAs in Korea, designated by government bodies according to about 10 relevant laws
- Most of PAs managed by government bodies or co-managed



범례	
	자연공원
	야생생물보호구역
	특정도서
	생태경관보전지역
	습지보호지역
	해양보호구역
	환경보전해역
	천연기념물
	명승
	백두대간보호지역
	산림유전자원보호구역
	람사르습지
	생물권보전지역
	세계자연유산

Unauthorized use prohibited.

0 50 100 150 Kilometers

## Background

- Some protected sites owned and/or managed by private, NGOs, or company without any specific legal designation.
- Less recognized PPAs rather than other governance types.



**Traditional Ownership for River, Mountain, and Ocean**

“산림천택여민공리지” and “산량수량일구인민공리지”

**The Traditional Gye (village treaty) for commons**



## **Examples: PPAs in Korea**

# The National Trust of Korea

- Established in 2000
- Natural and cultural heritages for the future generation

## Gangwha Maewhamarum Habitat



- To protect Maewhamarum (*Ranunculus kazusensis* Makino) Habitat from land consolidation in 2002
- Total Area: 3,009 m<sup>2</sup>
  - Purchased through Citizen fund-raising: 2,640 m<sup>2</sup>
  - Ex-owner donation: 369 m<sup>2</sup>
- Owned and managed by the National Trust of Korea

# The National Trust of Korea

## Yeon-cheon forest in adjoining area of DMZ

- To protect ecosystem from potential development in 2007
- Total Area: 39,372 m<sup>2</sup>, Ex-owner donation
- Owned and managed by the National Trust of Korea

## Toad habitat in Wonheung-i bank

- To protect toad habitat and biodiversity in 2009
- Total Area: 1,008 m<sup>2</sup>
  - Purchased through Citizen fund-raising
- Owned by the National Trust of Korea
- Managed by local NGO (Friends of Toad)



# National Nature Trust

- Enacted “the National Trust Act for the Natural Environment and the Cultural Heritage” in 2006.
- Established by the National Trust Act of 2006 in Korea.

**Asiantic Black Bear Habitat**  
**Jeju Gotjawal (forest after volcano)**  
**Demilitarized Zone (DMZ)**

# The Garden of Morning Calm

- Established in 1996, Founder Sang-Kyung Han
- About 330,000 m<sup>2</sup>
- Meditate and Rest in nature and traditional garden
- Retained Plants: a total of 5,000 species







Unauthorized use prohibited.

# Eco Green Campus (Samyang)

## SAMYANG EcoGreen Campus

- Opened the Daegoallyeong cattle ranch in 1972
- Started to provide tour service in 2007
- Changed the name to Samyang eco green campus from Samyang Livestock in 2012
- Total Area: 19.1 km<sup>2</sup> (grassland 6.5 km<sup>2</sup>)  
(including private land: about 30%)







고산습지  
(질미늪, 0.1%)



침엽수림  
(소나무군락, 0.4%)



활엽수림  
(신갈나무군락, 39.5%)



초본식생지  
(목초지, 24.7%)



묘포장  
(반지, 0.3%)



시설지  
(축사 등, 0.1%)

Unauthorized use prohibited.







# Challenges

## Faced Challenges

- *Hard to find out information on PPAs.*
- *Whether candidate sites of PPAs comply with PA definition of IUCN and CBD.*
- *How to integrate or connect PPAs to National PA system?*





*Thank you...*